

## Open Wedge Socket OWS B with Bolt

---

### Product information



Intended for attaching of wire rope where switching often occur, e.g. blocks of mobilecranes, or to be able to adjust the length of the wire rope. See recommended assembly to get correct results.

The wedge socket is delivered complete with wedge, bolt, nut and cotterpin.

2 surface finishes available:

- Model OWS B: blue painted.
- Model OWS BGAL: Hot dipped galvanized.

Model OWS 0.25 and OWS 0.5 only standard available in hot dipped galvanized ... [Read more](#)

---

**Material:** Quenched and tempered cast steel.

**Marking:** Size, wire rope diameter and batch or serial number.

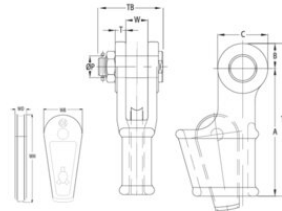
**Temperature range:** -40°C to + 110°C - Use at higher temperatures possible with reduction of WLL.

**Finish:** Blue painting or hot dipped galvanized.

**Note:** The efficiency of a 6 and 8 strand wire rope/wedge socket connection is 80% of the minimum breaking load of the wire but limited to the minimum breaking load of the socket (MBL).

## Open Wedge Socket OWS B with Bolt

### Blueprint



### Technical data

Part code	Rope Ø range mm	MBL tonnes	Finish	A in	B in	C in	øP mm in	T in	TLmm in	TBmm in	Wmm in	WH mm in	WB mm in	WD mm in	Weight lb
121500800212	7-8	8	Galvanized	4.33	0.71	1.42	0.63	0.35	5.04	2.44	0.71	2.76	1.38	0.35	1.76
121500800215	7-8	8	Painted	4.33	0.71	1.42	0.63	0.35	5.04	2.44	0.71	2.76	1.38	0.35	1.76
121501000212	9-10	12	Galvanized	5.71	0.91	1.81	0.83	0.43	6.61	2.95	0.83	2.91	1.42	0.47	3.75
121501000215	9-10	12	Painted	5.71	0.91	1.81	0.83	0.43	6.61	2.95	0.83	2.91	1.42	0.47	3.75
121501300215	11-13	20	Painted	6.18	1.14	2.24	0.98	0.47	7.28	3.15	0.98	4.53	1.89	0.55	4.63
121501300212	11-13	20	Galvanized	6.18	1.14	2.24	0.98	0.47	7.28	3.15	0.98	4.53	1.89	0.55	4.63
121501600215	14-16	25	Painted	7.48	1.38	2.76	1.18	0.59	8.86	3.78	1.22	5.31	2.24	0.71	8.82
121501600212	14-16	25	Galvanized	7.48	1.38	2.76	1.18	0.59	8.86	3.78	1.22	5.31	2.24	0.71	8.82
121501900215	18-19	40	Painted	8.27	1.57	3.15	1.38	0.63	9.84	4.21	1.5	6.3	2.76	0.83	15.43
121501900212	18-19	40	Galvanized	8.27	1.57	3.15	1.38	0.63	9.84	4.21	1.5	6.3	2.76	0.83	15.43
121502200215	20-22	55	Painted	9.92	1.89	3.74	1.61	0.71	11.81	4.84	1.73	7.36	3.03	0.94	22.05
121502200212	20-22	55	Galvanized	9.92	1.89	3.74	1.61	0.71	11.81	4.84	1.73	7.36	3.03	0.94	22.05
121502600215	23-26	75	Painted	11.73	2.17	4.33	2.01	0.87	13.9	5.55	2.01	8.35	3.27	1.1	33.07
121502600212	23-26	75	Galvanized	11.73	2.17	4.33	2.01	0.87	13.9	5.55	2.01	8.35	3.27	1.1	33.07
121502900215	27-29	90	Painted	12.68	2.56	5.12	2.24	0.98	15.24	6.3	2.24	9.13	3.58	1.18	46.3
121502900212	27-29	90	Galvanized	12.68	2.56	5.12	2.24	0.98	15.24	6.3	2.24	9.13	3.58	1.18	46.3
121503200215	30-32	110	Painted	13.78	2.87	5.75	2.48	1.1	16.65	6.5	2.48	10.47	4.25	1.3	68.34
121503200212	30-32	110	Galvanized	13.78	2.87	5.75	2.48	1.1	16.65	6.5	2.48	10.47	4.25	1.3	68.34
121503600215	34-36	125	Painted	15.75	2.91	5.83	2.52	1.1	18.66	7.28	2.76	11.73	4.57	1.38	81.57
121503600212	34-36	125	Galvanized	15.75	2.91	5.83	2.52	1.1	18.66	7.28	2.76	11.73	4.57	1.38	81.57
121503900215	37-39	150	Painted	17.72	3.15	5.59	2.76	1.18	20.87	8.27	3.03	13.31	5.12	1.5	112.44
121503900212	37-39	150	Galvanized	17.72	3.15	5.59	2.76	1.18	20.87	8.27	3.03	13.31	5.12	1.5	112.44

## Open Wedge Socket OWS B with Bolt

### Technical data

Part code	Rope Ø range mm	MBL tonnes	Finish	A in	B in	C in	øP mm in	T in	TLmm in	TBmm in	Wmm in	WH mm in	WB mm in	WD mm in	Weight lb
121504200215	40-42	170	Painted	19.69	3.43	6.3	2.99	1.3	23.11	8.23	2.99	14.69	5.51	1.61	141.1
121504200212	40-42	170	Galvanized	19.69	3.43	6.3	2.99	1.3	23.11	8.23	2.99	14.69	5.51	1.61	141.1
121504800215	43-48	225	Painted	21.65	3.94	7.32	3.5	1.54	25.59	9.33	3.5	16.06	5.75	1.89	211.64
121504800212	43-48	225	Galvanized	21.65	3.94	7.32	3.5	1.54	25.59	9.33	3.5	16.06	5.75	1.89	211.64
121505200215	49-52	280	Painted	25.08	4.13	8.07	3.74	1.81	29.13	10.35	3.98	17.72	6.3	2.09	286.6
121505200212	49-52	280	Galvanized	25.08	4.13	8.07	3.74	1.81	29.13	10.35	3.98	17.72	6.3	2.09	286.6
121505800215	54-58	360	Painted	25.98	4.92	9.84	4.25	2.13	30.91	11.73	4.49	18.5	6.61	2.28	396.83
121505800212	54-58	360	Galvanized	25.98	4.92	9.84	4.25	2.13	30.91	11.73	4.49	18.5	6.61	2.28	396.83
121506800215	60-68	425	Painted	32.87	5.31	10.63	4.76	2.36	38.19	12.99	5	19.69	6.93	2.56	606.27
121506800212	60-68	425	Galvanized	32.87	5.31	10.63	4.76	2.36	38.19	12.99	5	19.69	6.93	2.56	606.27
121507600215	72-76	460	Painted	39.37	5.91	11.81	5.24	2.99	45.28	14.96	5.75	21.65	9.61	2.76	970.03
121507600212	72-76	460	Galvanized	39.37	5.91	11.81	5.24	2.99	45.28	14.96	5.75	21.65	9.61	2.76	970.03
121508600215	81-86	625	Painted	45.67	5.91	11.81	5.51	3.11	51.57	15.63	6.26	26.38	10.24	3.15	1,124.36
121508600212	81-86	625	Galvanized	45.67	5.91	11.81	5.51	3.11	51.57	15.63	6.26	26.38	10.24	3.15	1,124.36