

## Open Spelter Sockets with Bolt and Nut OSS B

### Product information



Quenched and tempered cast steel range steel wire rope sockets for embedment with cast compound with mechanical values (Charpy-V > 42 Joule /-20°C) for tough and low temperature use. For wire rope diameter 6 - 203 mm (1/4" - 8").

2 surface finishes available:

- Model OSS B: blue painted. (OSS 196 - OSS 100 only hot dipped galvanized)
- Model OSS B.GAL: Hot dipped galvanized.

#### Features:

- Bolt securing by nut and cotter pin.
- All spelter sockets have a 100% efficiency.
- Also available with pin + cotter pin ( type OSS P )

... [Read more](#)

**Material:** Quenched and tempered cast steel

**Marking:** Size, wire rope diameter and batch or serial number.

**Temperature range:** From - 40°C up to +110°C - 100% capacity range.

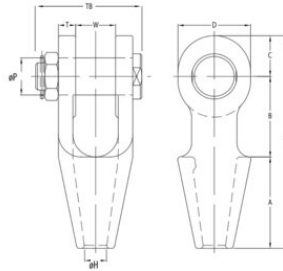
**Finish:** OSS B blue painted - OSS BGALV : Hot dipped galvanized.

**Note:** For intermediate rope diameter select fittings with nearest following size.

**Warning:** Compare the spelter's and the wire rope's minimum breaking load.

# Open Spelter Sockets with Bolt and Nut OSS B

## Blueprint



## Technical data

Part code	Code	Rope Ø range mm	MBL tonnes	Finish	Strand Ø mm	A in	B in	C in	D in	Ø Hmm in	Ø Pmm in	T in	TLmm in	TBmm in	Wmm in	Weight lb
122100700252	OSS196B.GAL	6-7	8	Galvanized	-	1.97	1.57	0.75	1.34	0.35	0.63	0.35	4.29	2.44	0.75	1.1
122101000252	OSS197B.GAL	8-10	12	Galvanized	-	2.24	1.77	0.87	1.65	0.51	0.83	0.43	4.88	2.95	0.83	1.76
122101000255	OSS197B	8-10	12	Painted	-	2.24	1.77	0.87	1.65	0.51	0.83	0.43	4.88	2.95	0.83	1.76
122101300252	OSS198B.GAL	11-13	20	Galvanized	-	2.52	2.01	1.06	1.97	0.59	0.98	0.47	5.59	3.15	0.98	2.43
122101600252	OSS199B.GAL	14-16	25	Galvanized	13	2.99	2.48	1.26	2.28	0.71	1.18	0.55	6.73	3.78	1.26	4.19
122101600255	OSS 199 B	14-16	25	Painted	-	2.99	2.48	1.26	2.28	0.71	1.18	0.55	6.73	3.78	1.26	4.19
122101900252	OSS100B.GAL	18-19	40	Galvanized	14-16	3.5	2.99	1.57	2.76	0.87	1.38	0.63	8.07	4.21	1.5	6.83
122101900255	OSS100B	18-19	40	Painted	14-16	3.5	2.99	1.57	2.76	0.87	1.38	0.63	8.07	4.21	1.5	6.83
122102200255	OSS104B	20-22	55	Painted	18-19	3.98	3.5	1.77	3.15	0.98	1.61	0.75	9.25	4.84	1.73	10.36
122102200252	OSS104B.GAL	20-22	55	Galvanized	18-19	3.98	3.5	1.77	3.15	0.98	1.61	0.75	9.25	4.84	1.73	10.36
122102600255	OSS108B	23-26	75	Painted	20-22	4.49	3.98	2.36	4.09	1.14	2.01	0.87	10.83	5.55	2.01	17.64
122102600252	OSS108B.GAL	23-26	75	Galvanized	20-22	4.49	3.98	2.36	4.09	1.14	2.01	0.87	10.83	5.55	2.01	17.64
122103000255	OSS111B	27-30	90	Painted	23-26	5	4.49	2.56	4.49	1.3	2.24	0.98	12.05	6.3	2.24	26.46
122103000252	OSS111B.GAL	27-30	90	Galvanized	23-26	5	4.49	2.56	4.49	1.3	2.24	0.98	12.05	6.3	2.24	26.46
122103600255	OSS115B	31-36	125	Painted	27-28	5.47	5	2.83	4.96	1.54	2.48	1.1	13.31	6.5	2.48	35.27
122103600252	OSS115B.GAL	31-36	125	Galvanized	27-28	5.47	5	2.83	4.96	1.54	2.48	1.1	13.31	6.5	2.48	35.27
122103900255	OSS118B	37-39	150	Painted	30-32	5.98	6.38	3.15	5.59	1.65	2.76	1.18	15.51	7.83	2.99	50.71
122103900252	OSS118B.GAL	37-39	150	Galvanized	30-32	5.98	6.38	3.15	5.59	1.65	2.76	1.18	15.51	7.83	2.99	50.71
122104200255	OSS120B	40-42	170	Painted	33-35	6.5	6.5	3.46	6.14	1.77	2.99	1.3	16.46	8.23	2.99	61.73
122104200252	OSS120B.GAL	40-42	170	Galvanized	33-35	6.5	6.5	3.46	6.14	1.77	2.99	1.3	16.46	8.23	2.99	61.73
122104800255	OSS125B	43-48	225	Painted	36-40	7.52	7.01	3.94	6.93	2.05	3.5	1.54	18.46	9.33	3.5	94.8
122104800252	OSS125B.GAL	43-48	225	Galvanized	36-40	7.52	7.01	3.94	6.93	2.05	3.5	1.54	18.46	9.33	3.5	94.8

## Open Spelter Sockets with Bolt and Nut OSS B

### Technical data

Part code	Code	Rope Ø range mm	MBL tonnes	Finish	Strand Ø mm	A in	B in	C in	D in	Ø Hmm in	Ø Pmm in	T in	TLmm in	TBmm in	Wmm in	Weight lb
122105400255	OSS128B	49-54	280	Painted	42-45	8.5	8.98	4.25	7.64	2.32	3.74	1.77	21.73	10.35	3.98	136.69
122105400252	OSS128B.GAL	49-54	280	Galvanized	42-45	8.5	8.98	4.25	7.64	2.32	3.74	1.77	21.73	10.35	3.98	136.69
122106000255	OSS130B	55-60	360	Painted	46-48	9.02	10	4.72	8.27	2.52	4.25	2.09	23.74	11.73	4.45	198.42
122106000252	OSS130B.GAL	55-60	360	Galvanized	46-48	9.02	10	4.72	8.27	2.52	4.25	2.09	23.74	11.73	4.45	198.42
122106800255	OSS132B	61-68	425	Painted	50-54	9.76	10.75	5.24	9.29	2.95	4.76	2.36	25.75	12.99	5	271.17
122106800252	OSS132B.GAL	61-68	425	Galvanized	50-54	9.76	10.75	5.24	9.29	2.95	4.76	2.36	25.75	12.99	5	271.17
122107500255	OSS135B	69-75	460	Painted	56-62	10.98	10.98	5.43	9.45	3.19	5	2.87	27.4	14.13	5.24	350.54
122107500252	OSS135B.GAL	69-75	460	Galvanized	56-62	10.98	10.98	5.43	9.45	3.19	5	2.87	27.4	14.13	5.24	350.54
122108000255	OSS138B	76-80	560	Painted	64-67	12.01	11.26	5.75	9.92	3.46	5.24	2.99	29.02	14.96	5.75	418.88
122108000252	OSS138B.GAL	76-80	560	Galvanized	64-67	12.01	11.26	5.75	9.92	3.46	5.24	2.99	29.02	14.96	5.75	418.88
122108600255	OSS140B	81-86	625	Painted	69-76	12.99	11.73	6.3	11.42	3.62	5.51	3.11	31.02	15.63	6.26	507.06
122108600252	OSS140B.GAL	81-86	625	Galvanized	69-76	12.99	11.73	6.3	11.42	3.62	5.51	3.11	31.02	15.63	6.26	507.06
122109300255	OSS142B	87-93	720	Painted	78-86	14.02	12.52	7.01	12.6	3.9	5.98	3.27	33.54	16.5	6.73	632.73
122109300252	OSS142B.GAL	87-93	720	Galvanized	78-86	14.02	12.52	7.01	12.6	3.9	5.98	3.27	33.54	16.5	6.73	632.73
122110200255	OSS144B	94-102	875	Painted	88-96	15	13.5	7.48	13.78	4.25	7.01	3.5	35.98	17.76	7.52	831.14
122110200252	OSS144B.GAL	94-102	875	Galvanized	88-96	15	13.5	7.48	13.78	4.25	7.01	3.5	35.98	17.76	7.52	831.14
122111500255	OSS146B	108-115	1,200	Painted	98-110	17.72	18.9	8.46	15.75	5.08	7.68	3.94	45.08	19.92	8.07	1,208.13
122111500252	OSS146B.GAL	108-115	1,200	Galvanized	98-110	17.72	18.9	8.46	15.75	5.08	7.68	3.94	45.08	19.92	8.07	1,208.13
122113000255	OSS150B	120-130	1,400	Painted	112-124	19.69	19.69	9.84	17.72	5.79	8.66	4.33	49.21	21.5	8.86	1,688.74
122113000252	OSS150B.GAL	120-130	1,400	Galvanized	112-124	19.69	19.69	9.84	17.72	5.79	8.66	4.33	49.21	21.5	8.86	1,688.74
122114000255	OSS155B	135-140	1,600	Painted	125-132	21.26	19.57	10.35	18.9	6.18	9.45	5.51	51.18	24.53	9.06	2,383.2
122114000252	OSS155B.GAL	135-140	1,600	Galvanized	125-132	21.26	19.57	10.35	18.9	6.18	9.45	5.51	51.18	24.53	9.06	2,383.2
122115300255	OSS160B	142-153	2,000	Painted	133-143	23.03	19.88	10.83	19.69	6.73	10.04	5.51	53.74	25.79	9.84	2,645.55
122115300252	OSS160B.GAL	142-153	2,000	Galvanized	133-143	23.03	19.88	10.83	19.69	6.73	10.04	5.51	53.74	25.79	9.84	2,645.55
122116500255	OSS165B	154-165	2,220	Painted	144-154	24.8	20.87	11.81	21.65	7.28	10.83	5.91	57.48	26.97	10.24	3,249.62
122116500252	OSS165B.GAL	154-165	2,220	Galvanized	144-154	24.8	20.87	11.81	21.65	7.28	10.83	5.91	57.48	26.97	10.24	3,249.62
122117800255	OSS170B	166-178	2,500	Painted	155-166	26.77	22.44	12.2	22.44	7.83	11.61	5.91	61.42	28.15	11.02	3,648.65
122117800252	OSS170B.GAL	166-178	2,500	Galvanized	155-166	26.77	22.44	12.2	22.44	7.83	11.61	5.91	61.42	28.15	11.02	3,648.65
122119100255	OSS175B	180-191	2,800	Painted	167-179	28.54	23.62	12.8	23.62	8.39	12.2	6.1	64.96	29.53	11.81	4,312.25
122119100252	OSS175B.GAL	180-191	2,800	Galvanized	167-179	28.54	23.62	12.8	23.62	8.39	12.2	6.1	64.96	29.53	11.81	4,312.25
122120400255	OSS180B	192-204	3,200	Painted	180-191	30.51	24.41	13.58	25.2	9.02	12.99	6.3	68.5	31.1	12.6	5,077.25

## Open Spelter Sockets with Bolt and Nut OSS B

### Technical data

Part code	Code	Rope Ø range mm	MBL tonnes	Finish	Strand Ø mm	A in	B in	C in	D in	Ø Hmm in	Ø Pmm in	T in	TLmm in	TBmm in	Wmm in	Weight lb
122120400252	OSS180B.GAL	192-204	3,200	Galvanized	180-191	30.51	24.41	13.58	25.2	9.02	12.99	6.3	68.5	31.1	12.6	5,077.25