

Fast Connector Socket FCS

Product information



Forged clevis fittings with Pin and cutterpin for fast connection of steel wire rope. Connector shall be used with non-rotating or cat 1. rotation resistant wire rope only. The connector has to be moulded / casted on the steel wire rope with wirelock resin.

... [Read more](#)

Features: Designed for use with mobile cranes.

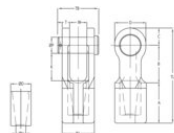
Material: Quenched and tempered cast steel.

Finish: Blue painted (P) or hot dip galvanized (G).

Warning: Compare the spelter's and the wire rope's minimum breaking load.

Fast Connector Socket FCS

Blueprint



Technical data

Part code	Code	Rope Ø range mm	MBL tonnes	Finish	A in	B in	C in	Ø H mm in	Ø P mm in	T in	W mm in	D, in	Ø D mm in	Ø J mm in	K in	TB mm in	TL mm in	Weight lb
122101300165	FCS 701 P	11-13	20	Painted	2.44	2.4	1.06	0.59	0.98	0.47	0.98	1.97	1.3	1.93	1.81	2.64	5.91	3.53
122101300162	FCS 701 PG	11-13	20	Galvanized	2.44	2.4	1.06	0.59	0.98	0.47	0.98	1.97	1.3	1.93	1.81	2.64	5.91	3.53
122101600165	FCS 702 P	13-16	25	Painted	2.83	3.07	1.26	0.71	1.18	0.55	1.26	2.28	1.5	2.36	2.32	3.35	7.17	5.73
122101600162	FCS 702 PG	13-16	25	Galvanized	2.83	3.07	1.26	0.71	1.18	0.55	1.26	2.28	1.5	2.36	2.32	3.35	7.17	5.73
122101900165	FCS 703 P	16-19	40	Painted	3.35	3.66	1.57	0.83	1.38	0.63	1.5	2.76	1.77	2.76	2.72	3.74	8.58	9.92
122101900162	FCS 703 PG	16-19	40	Galvanized	3.35	3.66	1.57	0.83	1.38	0.63	1.5	2.76	1.77	2.76	2.72	3.74	8.58	9.92
122102200165	FCS 704 P	20-22	55	Painted	4.02	4.17	1.77	0.94	1.61	0.75	1.73	3.15	1.97	3.23	3.19	4.33	9.96	14.33
122102200162	FCS 704 PG	20-22	55	Galvanized	4.02	4.17	1.77	0.94	1.61	0.75	1.73	3.15	1.97	3.23	3.19	4.33	9.96	14.33
122102600165	FCS 705 P	23-26	75	Painted	4.53	4.84	2.36	1.1	2.01	0.87	2.01	4.09	2.36	3.74	3.54	5.04	11.73	24.25
122102600162	FCS 705 PG	23-26	75	Galvanized	4.53	4.84	2.36	1.1	2.01	0.87	2.01	4.09	2.36	3.74	3.54	5.04	11.73	24.25
122102900165	FCS 706 P	27-29	90	Painted	5.51	5.98	2.56	1.26	2.24	0.98	2.24	4.49	2.76	4.21	4.57	5.59	14.06	35.27
122102900162	FCS 706 PG	27-29	90	Galvanized	5.51	5.98	2.56	1.26	2.24	0.98	2.24	4.49	2.76	4.21	4.57	5.59	14.06	35.27