

Fast Connector Socket FCS - with bolt

Product information



Forged clevis fittings with bolt, nut and cutterpin for fast connection of steel wire rope. Connector shall be used with non-rotating or cat 1. rotation resistant wire rope only.

The connector has to be moulded/casted on the steel wire rope with [wirelock resin](#) ... [Read more](#)

Features: Designed for use with mobile cranes.

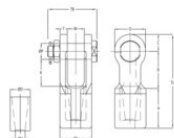
Material: Quenched and tempered cast steel.

Finish: Blue painted or hot dip galvanized.

Warning: Compare the spelter's and the wire rope's minimum breaking load.

Fast Connector Socket FCS - with bolt

Blueprint



Fast Connector Socket FCS - with bolt

Technical data

Part code	Code	Rope Ø range mm	MBL tonnes	Finish	A in	B in	C in	Ø H mm in	Ø P mm in	T in	W mm in	D, in	Ø D mm in	Ø J mm in	K in	TB mm in	TL mm in	Weight lb
122101300155	FCS 701 B	11-13	20	Painted	2.44	2.4	1.06	0.59	0.98	0.47	0.98	1.97	1.3	1.93	1.81	3.15	5.91	3.53
122101300152	FCS 701 B.G	11-13	20	Galvanized	2.44	2.4	1.06	0.59	0.98	0.47	0.98	1.97	1.3	1.93	1.81	3.15	5.91	3.53
122101600155	FCS 702 B	13-16	25	Painted	2.83	3.07	1.26	0.71	1.18	0.55	1.26	2.28	1.5	2.36	2.32	3.78	7.17	5.73
122101600152	FCS 702 B.G	13-16	25	Galvanized	2.83	3.07	1.26	0.71	1.18	0.55	1.26	2.28	1.5	2.36	2.32	3.78	7.17	5.73
122101900155	FCS 703 B	16-19	40	Painted	3.35	3.66	1.57	0.83	1.38	0.63	1.5	2.76	1.77	2.76	2.72	4.21	8.58	9.92
122101900152	FCS 703 B.G	16-19	40	Galvanized	3.35	3.66	1.57	0.83	1.38	0.63	1.5	2.76	1.77	2.76	2.72	4.21	8.58	9.92
122102200155	FCS 704 B	20-22	55	Painted	4.02	4.17	1.77	0.94	1.61	0.75	1.73	3.15	1.97	3.23	3.19	4.84	9.96	14.33
122102200152	FCS 704 B.G	20-22	55	Galvanized	4.02	4.17	1.77	0.94	1.61	0.75	1.73	3.15	1.97	3.23	3.19	4.84	9.96	14.33
122102600155	FCS 705 B	23-26	75	Painted	4.53	4.84	2.36	1.1	2.01	0.87	2.01	4.09	2.36	3.74	3.54	5.55	11.73	24.25
122102600152	FCS 705 B.G	23-26	75	Galvanized	4.53	4.84	2.36	1.1	2.01	0.87	2.01	4.09	2.36	3.74	3.54	5.55	11.73	24.25
122102900155	FCS 706 B	27-29	90	Painted	5.51	5.98	2.56	1.26	2.24	0.98	2.24	4.49	2.76	4.21	4.57	6.3	14.06	35.27
122102900152	FCS 706 B.G	27-29	90	Galvanized	5.51	5.98	2.56	1.26	2.24	0.98	2.24	4.49	2.76	4.21	4.57	6.3	14.06	35.27
122103200152	FCS 707 B.SR	30-32	125	Galvanized	6.3	6.73	2.87	1.54	2.52	1.1	2.72	4.96	3.35	4.92	5.12	7.28	15.91	39.68
122103600152	FCS 708 B.SR	33-36	125	Galvanized	6.3	6.73	2.87	1.54	2.52	1.1	2.72	4.96	3.35	4.92	5.12	7.28	15.91	50.71
122103900152	FCS 709 B.SR	37-39	150	Galvanized	6.93	7.36	3.15	1.65	2.76	1.18	2.99	5.59	3.54	5.35	5.59	7.91	17.44	63.93
122104200152	FCS 710 B.SR	40-42	170	Galvanized	7.4	7.8	3.46	1.77	2.99	1.3	2.99	6.14	3.74	5.59	5.91	8.23	18.66	79.37
122104800152	FCS 711 B.SR	43-48	225	Galvanized	8.27	9.13	3.94	2.05	3.5	1.54	3.5	6.93	4.33	6.57	6.89	9.33	21.34	127.87