

## Closed Spelter Socket CSS

---

### Product information



The Ropeblock closed spelter socket CSS designed with mechanical values (Charpy-V > 42 joule / - 20° C) for tough and low temperature use. All sockets have a 100% efficiency on the MBL of the steel wire rope but are limited to the MBL of the socket.

The CSS sockets are Type Approved by DNV and Lloyd's Register.

CSS 296 until CSS 201 only available with hot dipped galvanized finish [... Read more](#)

---

**Material:** Quenched and tempered cast steel.

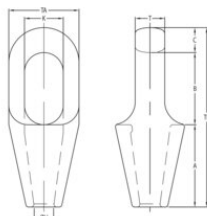
**Marking:** CE-marked

**Temperature range:** - 40°C to + 110°C - Use at higher temperatures possible with reduction of WLL.

**Finish:** Hot dipped Galvanized (G) or painted blue (P).

## Closed Spelter Socket CSS

### Blueprint



### Technical data

Part code	Rope Ø range mm	MBL tonnes	Finish	Strand Ø mm	A in	B in	C in	Ø H mm in	K in	T in	TA mm in	TL mm in	Weight lb
122100700182	6-7	8	Galvanized	-	1.97	1.57	0.43	0.35	0.87	0.51	1.46	3.98	0.66
122100700185	6-7	8	Painted	-	1.97	1.57	0.43	0.35	0.87	0.51	1.46	3.98	0.66
122101000182	8-10	12	Galvanized	-	2.24	1.89	0.55	0.47	0.98	0.71	1.69	4.69	1.1
122101000185	8-10	12	Painted	-	2.24	1.89	0.55	0.47	0.98	0.71	1.69	4.69	1.1
122101300182	11-13	20	Galvanized	-	2.52	2.32	0.67	0.55	1.18	0.91	2.01	5.51	1.54
122101300185	11-13	20	Painted	-	2.52	2.32	0.67	0.55	1.18	0.91	2.01	5.51	1.54
122101600182	14-16	25	Galvanized	13	2.99	2.56	0.83	0.71	1.42	1.02	2.64	6.38	3.09
122101600185	14-16	25	Painted	13	2.99	2.56	0.83	0.71	1.42	1.02	2.64	6.38	3.09
122101900182	18-19	40	Galvanized	14-16	3.5	3.07	1.06	0.83	1.65	1.26	2.99	7.64	4.85
122101900185	18-19	40	Painted	14-16	3.5	3.07	1.06	0.83	1.65	1.26	2.99	7.64	4.85
122102200182	20-22	55	Galvanized	18-19	3.98	3.54	1.3	0.94	1.85	1.5	3.62	8.82	8.38
122102200185	20-22	55	Painted	18-19	3.98	3.54	1.3	0.94	1.85	1.5	3.62	8.82	8.38
122102600182	23-26	75	Galvanized	20-22	4.49	4.06	1.42	1.1	2.24	1.73	4.09	9.96	11.9
122102600185	23-26	75	Painted	20-22	4.49	4.06	1.42	1.1	2.24	1.73	4.09	9.96	11.9
122103000182	27-30	90	Galvanized	23-26	5	4.57	1.54	1.26	2.56	2.01	4.49	11.1	15.43
122103000185	27-30	90	Painted	23-26	5	4.57	1.54	1.26	2.56	2.01	4.49	11.1	15.43
122103600182	31-36	125	Galvanized	27-28	5.47	5.12	1.69	1.54	2.8	2.24	4.96	12.28	22.05
122103600185	31-36	125	Painted	27-28	5.47	5.12	1.69	1.54	2.8	2.24	4.96	12.28	22.05
122103900182	37-39	150	Galvanized	30-32	5.98	6.1	2.01	1.65	3.19	2.48	5.35	14.09	28.66
122103900185	37-39	150	Painted	30-32	5.98	6.1	2.01	1.65	3.19	2.48	5.35	14.09	28.66
122104200182	40-42	170	Galvanized	33-35	6.5	6.73	2.13	1.77	3.27	2.76	5.75	15.35	37.48
122104200185	40-42	170	Painted	33-35	6.5	6.73	2.13	1.77	3.27	2.76	5.75	15.35	37.48

## Closed Spelter Socket CSS

### Technical data

Part code	Rope Ø range mm	MBL tonnes	Finish	Strand Ø mm	A in	B in	C in	Ø Hmm in	K in	T in	TA mm in	TL mm in	Weight lb
122104800182	43-48	225	Galvanized	36-40	7.48	7.8	2.17	2.05	3.66	2.99	6.73	17.44	57.32
122104800185	43-48	225	Painted	36-40	7.48	7.8	2.17	2.05	3.66	2.99	6.73	17.44	57.32
122105400182	49-54	280	Galvanized	42-45	8.5	8.82	2.44	2.32	3.94	3.23	7.6	19.76	81.57
122105400185	49-54	280	Painted	42-45	8.5	8.82	2.44	2.32	3.94	3.23	7.6	19.76	81.57
122106000182	55-60	360	Galvanized	46-48	8.98	9.72	2.87	2.56	4.41	3.62	8.5	21.57	110.23
122106000185	55-60	360	Painted	46-48	8.98	9.72	2.87	2.56	4.41	3.62	8.5	21.57	110.23
122106800182	61-68	425	Galvanized	50-54	9.76	10.63	3.11	2.87	5.51	4.02	9.49	10.12	145.51
122106800185	61-68	425	Painted	50-54	9.76	10.63	3.11	2.87	5.51	4.02	9.49	10.12	145.51
122107500182	69-75	460	Galvanized	56-62	10.98	11.26	3.11	3.11	6.26	4.88	10.75	25.35	200.62
122107500185	69-75	460	Painted	56-62	10.98	11.26	3.11	3.11	6.26	4.88	10.75	25.35	200.62
122108000182	76-80	560	Galvanized	64-67	12.4	11.73	3.27	3.46	6.73	5.24	11.5	27.4	257.94
122108000185	76-80	560	Painted	64-67	12.4	11.73	3.27	3.46	6.73	5.24	11.5	27.4	257.94
122108600182	81-86	625	Galvanized	69-76	12.99	12.24	4.02	3.62	7.24	5.75	12.24	29.25	275.58
122108600185	81-86	625	Painted	69-76	12.99	12.24	4.02	3.62	7.24	5.75	12.24	29.25	275.58
122109300182	87-93	720	Galvanized	78-86	14.02	12.99	4.02	3.86	7.76	6.26	12.99	31.02	388.01
122109300185	87-93	720	Painted	78-86	14.02	12.99	4.02	3.86	7.76	6.26	12.99	31.02	388.01
122110200182	94-102	875	Galvanized	88-96	15	14.02	4.25	4.21	8.5	7.01	14.25	33.27	502.65
122110200185	94-102	875	Painted	88-96	15	14.02	4.25	4.21	8.5	7.01	14.25	33.27	502.65
122111500182	108-115	1,200	Galvanized	98-110	17.72	16.73	4.92	5.08	9.25	7.48	15.94	39.37	712.09
122111500185	108-115	1,200	Painted	98-110	17.72	16.73	4.92	5.08	9.25	7.48	15.94	39.37	712.09
122113000182	120-130	1,400	Galvanized	112-124	19.69	20.67	4.92	5.79	10.24	7.87	17.72	45.28	985.47
122113000185	120-130	1,400	Painted	112-124	19.69	20.67	4.92	5.79	10.24	7.87	17.72	45.28	985.47
122114000182	135-140	1,600	Galvanized	125-132	21.26	19.49	5.91	6.02	11.42	8.66	20.47	46.65	1,421.98
122114000185	135-140	1,600	Painted	125-132	21.26	19.49	5.91	6.02	11.42	8.66	20.47	46.65	1,421.98
122115300182	142-153	2,000	Galvanized	133-143	23.03	20.87	6.69	6.73	12.01	9.45	21.46	50.59	1,633.63
122115300185	142-153	2,000	Painted	133-143	23.03	20.87	6.69	6.73	12.01	9.45	21.46	50.59	1,633.63
122116500182	154-165	2,220	Galvanized	144-154	24.8	22.24	6.89	7.28	12.99	9.84	22.64	53.94	1,895.98
122116500185	154-165	2,220	Painted	144-154	24.8	22.24	6.89	7.28	12.99	9.84	22.64	53.94	1,895.98
122117800182	166-178	2,500	Galvanized	155-166	26.77	23.23	7.09	7.83	12.99	10.63	23.43	57.09	2,171.56
122117800185	166-178	2,500	Painted	155-166	26.77	23.23	7.09	7.83	12.99	10.63	23.43	57.09	2,171.56
122119100182	180-191	2,800	Galvanized	167-179	28.54	24.41	7.48	8.39	13.78	11.42	24.61	60.43	2,608.07

## Closed Spelter Socket CSS

### Technical data

Part code	Rope Ø range mm	MBL tonnes	Finish	Strand Ø mm	A in	B in	C in	Ø Hmm in	K in	T in	TA mm in	TL mm in	Weight lb
122119100185	180-191	2,800	Painted	167-179	28.54	24.41	7.48	8.39	13.78	11.42	24.61	60.43	2,608.07
122120400182	192-204	3,200	Galvanized	180-191	30.51	25.59	8.27	8.98	15.55	12.01	27.17	64.37	3,278.28
122120400185	192-204	3,200	Painted	180-191	30.51	25.59	8.27	8.98	15.55	12.01	27.17	64.37	3,278.28