

## Cast steel Sheave with Cylindrical Roller Bearing

### Product information



Self-lubricating cast sheaves are often applied in lifting, luffing and wire rope routing with intensive operating cycles. The groove opening angle was carefully designed to reduce potential twist resulting from fleet angles. In combination with the self-lubricating effect, the wire rope in your system will last longer. The latter was proved in recent research, in which several sheave materials were compared in terms of their effect on rope twist.

- Different shaft sizes possible.
- Groove may be adjusted to other wire rope diameters.

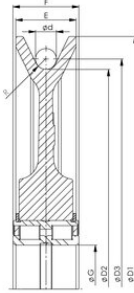
[... Read more](#)

**Material:** Cast steel

**Note:** Custom made sheaves possible on request.

# Cast steel Sheave with Cylindrical Roller Bearing

## Blueprint



## Technical data

Part code	Rope Ø range mm	Shaft Ø mm	Groove radius	Sheave dia. mm	Bearing	d in	E in	F in	R in	D1 in	D2 in	D3 in	Ø G mm in	Weight lb
1401SE2505008B55	10	40	5.5	290 / 250	SL04 5008PP	0.39	1.26	1.5	0.22	11.42	9.84	10.24	1.57	13.01
1401SE2505008B6	11	40	6	290 / 250	SL04 5008PP	0.43	1.26	1.5	0.24	11.42	9.84	10.28	1.57	12.79
1401SE2505008B72	13	40	7.2	290 / 250	SL04 5008PP	0.51	1.26	1.5	0.28	11.42	9.84	10.35	1.57	13.67
1401SE28050107	13	50	7	320 / 280	SL04 5010PP	0.51	1.42	1.57	0.28	12.6	11.02	11.54	1.97	17.86
1401SE28050127	13	60	7	320 / 280	SL04 5012PP	0.51	1.65	1.81	0.28	12.6	11.02	11.54	2.36	20.72
1401SE260501275	14	60	7.5	300 / 260	SL04 5012PP	0.55	1.65	1.81	0.3	11.81	10.24	10.79	2.36	21.16
1401SE28050128	15	60	8	320 / 280	SL04 5012PP	0.59	1.65	1.81	0.31	12.6	11.02	11.61	2.36	20.28
1401SE2955008B85	16	40	8.5	330 / 295	SL04 5008PP	0.63	1.26	1.5	0.33	12.99	11.61	12.24	1.57	19.4
1401SE280501285	16	60	8.5	320 / 280	SL04 5012PP	0.63	1.65	1.81	0.33	12.6	11.02	11.65	2.36	20.06
1401SE260501285	16	60	8.5	300 / 260	SL04 5012PP	0.63	1.65	1.81	0.33	11.81	10.24	10.87	2.36	20.06
1401SE320501385	16	65	8.5	365 / 320	SL04 5013PP	0.63	1.65	1.81	0.33	14.37	12.6	13.23	2.56	29.76
1401SE355501385	16	65	8.5	410 / 355	SL04 5013PP	0.63	1.65	1.81	0.33	16.14	13.98	14.61	2.56	40.34
1401SE360501685	16	80	8.5	420 / 360	SL04 5016PP	0.63	2.17	2.36	0.33	16.54	14.17	14.8	3.15	48.28
1401SE400501385	16	65	8.5	460 / 400	SL04 5013PP	0.63	1.69	1.81	0.33	18.11	15.75	16.38	2.56	55.12
1401SE35550139	17	65	9	410 / 355	SL04 5013PP	0.67	1.65	1.81	0.35	16.14	13.98	14.65	2.56	39.9
1401SE3455010B95	18	50	9.5	385 / 345	SL04 5010PP	0.71	1.42	1.57	0.37	15.16	13.58	14.29	1.97	27.56
1401SE354501395	18	65	9.5	400 / 354	SL04 5013PP	0.71	1.65	1.81	0.37	15.75	13.94	14.65	2.56	36.38
1401SE355501395	18	65	9.5	410 / 355	SL04 5013PP	0.71	1.65	1.81	0.37	16.14	13.98	14.69	2.56	39.68
1401SE360501695	18	80	9.5	420 / 360	SL04 5016PP	0.71	2.17	2.36	0.37	16.54	14.17	14.88	3.15	47.62
1401SE400501395	18	65	9.5	460 / 400	SL04 5013PP	0.71	1.69	1.81	0.37	18.11	15.75	16.46	2.56	55.12
1401SE4005014B95	18	70	9.5	460 / 400	SL04 5014PP	0.71	1.93	2.13	0.37	18.11	15.75	16.46	2.76	56
1401SE280501210	19	60	10	320 / 280	SL04 5012PP	0.75	1.65	1.81	0.39	12.6	11.02	11.77	2.36	22.71

## Cast steel Sheave with Cylindrical Roller Bearing

### Technical data

Part code	Rope Ø range mm	Shaft Ø mm	Groove radius	Sheave dia. mm	Bearing	d in	E in	F in	R in	D1 in	D2 in	D3 in	Ø G mm in	Weight lb
1401SE3455010B10	19	50	10	385 / 345	SL04 5010PP	0.75	1.42	1.57	0.39	15.16	13.58	14.33	1.97	27.56
1401SE320501310	19	65	10	365 / 320	SL04 5013PP	0.75	1.65	1.81	0.39	14.37	12.6	13.35	2.56	29.1
1401SE355501610	19	80	10	410 / 355	SL04 5016PP	0.75	2.17	2.36	0.39	16.14	13.98	14.72	3.15	37.04
1401SE355501310	19	65	10	410 / 355	SL04 5013PP	0.75	1.65	1.81	0.39	16.14	13.98	14.72	2.56	39.24
1401SE360501610	19	80	10	420 / 360	SL04 5016PP	0.75	2.17	2.36	0.39	16.54	14.17	14.92	3.15	39.46
1401SE400501310	19	65	10	460 / 400	SL04 5013PP	0.75	1.69	1.81	0.39	18.11	15.75	16.5	2.56	54.67
1401SE400501610	19	80	10	460 / 400	SL04 5016PP	0.75	2.17	2.36	0.39	18.11	15.75	16.5	3.15	63.49
1401SE400501810	19	90	10	460 / 400	SL04 5018PP	0.75	2.44	2.64	0.39	18.11	15.75	16.5	3.54	68.34
1401SE450501810	19	90	10	515 / 450	SL04 5018PP	0.75	2.44	2.64	0.39	20.28	17.72	18.46	3.54	91.27
1401SE45016010	19	160	10	515 / 450	SL04 160PP	0.75	2.95	3.15	0.39	20.28	17.72	18.46	6.3	100.09
1401SE450502410	19	120	10	515 / 450	SL04 5024PP	0.75	2.95	3.15	0.39	20.28	17.72	18.46	4.72	105.6
1401SE4005014B115	21	70	11.5	460 / 400	SL04 5014PP	0.83	1.93	2.13	0.45	18.11	15.75	16.57	2.76	54.45
1401SE4005016115	21	80	11.5	460 / 400	SL04 5016PP	0.83	2.17	2.36	0.45	18.11	15.75	16.57	3.15	62.39
1401SE4005018115	21	90	11.5	460 / 400	SL04 5018PP	0.83	2.44	2.64	0.45	18.11	15.75	16.57	3.54	67.02
1401SE4825018115	21	90	11.5	560 / 482	SL04 5018PP	0.83	2.44	2.64	0.45	22.05	18.98	19.8	3.54	100.31
1401SE355501612	22	80	12	410 / 355	SL04 5016PP	0.87	2.17	2.36	0.47	16.14	13.98	14.84	3.15	37.04
1401SE400501612	22	80	12	460 / 400	SL04 5016PP	0.87	2.17	2.36	0.47	18.11	15.75	16.61	3.15	61.95
1401SE400501812	22	90	12	460 / 400	SL04 5018PP	0.87	2.44	2.64	0.47	18.11	15.75	16.61	3.54	66.58
1401SE450501812	22	90	12	515 / 450	SL04 5018PP	0.87	2.44	2.64	0.47	20.28	17.72	18.58	3.54	89.29
1401SE450502412	22	120	12	515 / 450	SL04 5024PP	0.87	2.95	3.15	0.47	20.28	17.72	18.58	4.72	103.62
1401SE450501813	24	90	13	515 / 450	SL04 5018 PP	0.94	2.44	2.64	0.51	20.28	17.72	18.66	3.54	90.39
1401SE528501813	24	90	13	595 / 528	SL04 5018PP	0.94	2.4	2.64	0.51	23.43	20.79	21.73	3.54	112.22
1401SE52820013	24	200	13	595 / 528	SL04 200PP	0.94	2.91	3.15	0.51	23.43	20.79	21.73	7.87	125
1401SE52816013	24	160	13	595 / 528	SL04 160PP	0.94	2.91	3.15	0.51	23.43	20.79	21.73	6.3	134.92
1401SE4505018135	25	90	13.5	515 / 450	SL04 5018PP	0.98	2.44	2.64	0.53	20.28	17.72	18.7	3.54	87.74
1401SE4505024135	25	120	13.5	515 / 450	SL04 5024PP	0.98	2.95	3.15	0.53	20.28	17.72	18.7	4.72	102.07
1401SE5005018B135	25	90	13.5	570 / 500	SL04 5018PP	0.98	2.4	2.64	0.53	22.44	19.69	20.71	3.54	103.18
1401SE5285018135	25	90	13.5	595 / 528	SL04 5018PP	0.98	2.4	2.64	0.53	23.43	20.79	21.77	3.54	111.55
1401SE528160135	25	160	13.5	595 / 528	SL04 160PP	0.98	2.91	3.15	0.53	23.43	20.79	21.77	6.3	117.95
1401SE5285024135	25	120	13.5	595 / 528	SL04 5024PP	0.98	2.91	3.15	0.53	23.43	20.79	21.77	4.72	127.43
1401SE6705024135	25	120	13.5	760 / 670	SL04 5024PP	0.98	2.91	3.15	0.53	29.92	26.38	27.36	4.72	204.15

# Cast steel Sheave with Cylindrical Roller Bearing

## Technical data

Part code	Rope Ø range mm	Shaft Ø mm	Groove radius	Sheave dia. mm	Bearing	d in	E in	F in	R in	D1 in	D2 in	D3 in	Ø G mm in	Weight lb
1401SE670200135	25	200	13.5	760 / 670	SL04 200PP	0.98	2.91	3.15	0.53	29.92	26.38	27.36	7.87	206.13
1401SE670160135	25	160	13.5	760 / 670	SL04 160PP	0.98	2.91	3.15	0.53	29.92	26.38	27.36	6.3	206.13
1401SE528501814	26	90	14	595 / 528	SL04 5018PP	1.02	2.4	2.64	0.55	23.43	20.79	21.81	3.54	100.09
1401SE52816014	26	160	14	595 / 528	SL04 160PP	1.02	2.91	3.15	0.55	23.43	20.79	21.81	6.3	117.29
1401SE528502414	26	120	14	595 / 528	SL04 5024PP	1.02	2.91	3.15	0.55	23.43	20.79	21.81	4.72	139.99
1401SE57516014	26	160	14	650 / 575	SL04 160PP	1.02	2.91	3.15	0.55	25.59	22.64	23.66	6.3	158.73
1401SE575502414	26	120	14	650 / 575	SL04 5024PP	1.02	2.91	3.15	0.55	25.59	22.64	23.66	4.72	160.06
1401SE575502214	26	110	14	650 / 575	SL04 5022PP	1.02	2.91	3.15	0.55	25.59	22.64	23.66	4.33	162.04
1401SE57520014	26	200	14	650 / 575	SL04 200PP	1.02	2.91	3.15	0.55	25.59	22.64	23.66	7.87	169.09
1401SE450501815	28	90	15	515 / 450	SL04 5018PP	1.1	2.44	2.64	0.59	20.28	17.72	18.82	3.54	86.42
1401SE450502415	28	120	15	515 / 450	SL04 5024PP	1.1	2.95	3.15	0.59	20.28	17.72	18.82	4.72	100.53
1401SE528501815	28	90	15	595 / 528	SL04 5018PP	1.1	2.4	2.64	0.59	23.43	20.79	21.89	3.54	110.01
1401SE52816015	28	160	15	595 / 528	SL04 160PP	1.1	2.83	3.15	0.59	23.43	20.79	21.89	6.3	116.18
1401SE528502415	28	120	15	595 / 528	SL04 5024PP	1.1	2.91	3.15	0.59	23.43	20.79	21.89	4.72	125.66
1401SE52820015	28	200	15	595 / 528	SL04 200PP	1.1	2.91	3.15	0.59	23.43	20.79	21.89	7.87	143.08
1401SE57516015	28	160	15	650 / 575	SL04 160PP	1.1	2.91	3.15	0.59	25.59	22.64	23.74	6.3	157.41
1401SE575502415	28	120	15	650 / 575	SL04 5024PP	1.1	2.91	3.15	0.59	25.59	22.64	23.74	4.72	158.73
1401SE57520015	28	200	15	650 / 575	SL04 200PP	1.1	2.91	3.15	0.59	25.59	22.64	23.74	7.87	167.77
1401SE63016015	28	160	15	710 / 630	SL04 160PP	1.1	2.91	3.15	0.59	27.95	24.8	25.91	6.3	182.54
1401SE630502415	28	120	15	710 / 630	SL04 5024PP	1.1	2.91	3.15	0.59	27.95	24.8	25.91	4.72	186.07
1401SE63020015	28	200	15	710 / 630	SL04 200PP	1.1	2.91	3.15	0.59	27.95	24.8	25.91	7.87	193.35
1401SE670502415	28	120	15	760 / 670	SL04 5024PP	1.1	2.91	3.15	0.59	29.92	26.38	27.48	4.72	201.28
1401SE67016015	28	160	15	760 / 670	SL04 160PP	1.1	2.91	3.15	0.59	29.92	26.38	27.48	6.3	203.27
1401SE67020015	28	200	15	760 / 670	SL04 200PP	1.1	2.91	3.15	0.59	29.92	26.38	27.48	7.87	213.85
1401SE575502216	30	110	16	650 / 575	SL04 5022PP	1.18	2.91	3.15	0.63	25.59	22.64	23.82	4.33	159.39
1401SE63016016	30	160	16	710 / 630	SL04 160PP	1.18	2.91	3.15	0.63	27.95	24.8	25.98	6.3	181
1401SE6305022B16	30	110	16	710 / 630	SL04 5022PP	1.18	2.91	3.15	0.63	27.95	24.8	25.98	4.33	184.09
1401SE630502416	30	120	16	710 / 630	SL04 5024PP	1.18	2.91	3.15	0.63	27.95	24.8	25.98	4.72	184.53
1401SE63020016	30	200	16	710 / 630	SL04 200PP	1.18	2.91	3.15	0.63	27.95	24.8	25.98	7.87	191.8
1401SE8005022165	31	110	16.5	890 / 800	SL04 5022PP	1.22	2.76	3.15	0.63	35.04	31.5	32.72	4.33	300.93
1401SE575502417	32	120	17	650 / 575	SL04 5024PP	1.26	2.91	3.15	0.67	25.59	22.64	23.9	4.72	156.31

## Cast steel Sheave with Cylindrical Roller Bearing

### Technical data

Part code	Rope Ø range mm	Shaft Ø mm	Groove radius	Sheave dia. mm	Bearing	d in	E in	F in	R in	D1 in	D2 in	D3 in	Ø G mm in	Weight lb
1401SE63016017	32	160	17	710 / 630	SL04 160PP	1.26	2.91	3.15	0.67	27.95	24.8	26.06	6.3	179.46
1401SE630502417	32	120	17	710 / 630	SL04 5024PP	1.26	2.91	3.15	0.67	27.95	24.8	26.06	4.72	182.98
1401SE63020017	32	200	17	710 / 630	SL04 200PP	1.26	2.91	3.15	0.67	27.95	24.8	26.06	7.87	190.26
1401SE670502417	32	120	17	760 / 670	SL04 5024PP	1.26	2.91	3.15	0.67	29.92	26.38	27.64	4.72	197.75
1401SE67016017	32	160	17	760 / 670	SL04 160PP	1.26	2.91	3.15	0.67	29.92	26.38	27.64	6.3	199.52
1401SE67020017	32	200	17	760 / 670	SL04 200PP	1.26	2.91	3.15	0.67	29.92	26.38	27.64	7.87	210.1
1401SE710502217	32	110	17	800 / 710	SL04 5022PP	1.26	2.83	3.15	0.67	31.5	27.95	29.21	4.33	220.02
1401SE800502617	32	130	17	890 / 800	SL04 5026PP	1.26	2.95	3.74	0.67	35.04	31.5	32.76	5.12	286.38
1401SE710502618	34	130	18	800 / 710	SL04 5026PP	1.34	3.07	3.74	0.71	31.5	27.95	29.29	5.12	216.71
1401SE710502218	34	110	18	800 / 710	SL04 5022PP	1.34	2.83	3.15	0.71	31.5	27.95	29.29	4.33	217.6
1401SE800502819	36	140	18	890 / 800	SL04 5028PP	1.42	3.35	3.74	0.71	35.04	31.5	32.91	5.51	335.98
1401SE710502420	38	120	20	800 / 710	SL04 5024PP	1.5	2.83	3.15	0.79	31.5	27.95	29.45	4.72	208.34
1401SE800502420	38	120	18	890 / 800	SL04 5024PP	1.5	2.76	3.15	0.71	35.04	31.5	32.99	4.72	280.21
1401SE800502620	38	130	18	890 / 800	SL04 5026PP	1.5	2.95	3.74	0.71	35.04	31.5	32.99	5.12	294.32
1401SE760503020	38	150	18	860 / 760	SL04 5030PP	1.5	3.35	3.94	0.71	33.86	29.92	31.42	5.91	295.86
1401SE800502820	38	140	18	890 / 800	SL04 5028PP	1.5	3.35	3.74	0.71	35.04	31.5	32.99	5.51	333.78
1401SE800503020	38	150	18	890 / 800	SL04 5030PP	1.5	3.54	3.94	0.71	35.04	31.5	32.99	5.91	337.31
1401SE7605026205	39	130	20.5	860 / 760	SL04 5026PP	1.54	2.95	3.74	0.81	33.86	29.92	31.46	5.12	304.68
1401SE800502821	40	140	21	890 / 800	SL04 5028PP	1.57	3.35	3.74	0.83	35.04	31.5	33.07	5.51	331.58
1401SE800503021	40	150	21	890 / 800	SL04 5030PP	1.57	3.54	3.94	0.83	35.04	31.5	33.07	5.91	335.98
1401SE8005028225	42	140	22.5	890 / 800	SL04 5028PP	1.65	3.35	3.74	0.89	35.04	31.5	33.15	5.51	328.49
1401SE8005030225	42	150	22.5	890 / 800	SL04 5030PP	1.65	3.54	3.94	0.89	35.04	31.5	33.15	5.91	352.96
1401SE8005030235	44	150	23.5	890 / 800	SL04 5030PP	1.73	3.54	3.94	0.93	35.04	31.5	33.23	5.91	329.81