

Sheave PA with Cylindrical Roller Bearings

Product information



Made fully out of Polyamid, plastic wire rope sheaves are the most lightweight sheaves in the Ropeblock portfolio. They come in many sizes, up to approx. 1,000 mm (for larger diameters a hybrid solution can be considered). Plastic sheaves are cost efficient and usually available from stock.

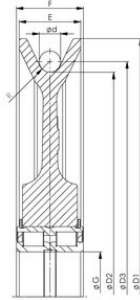
... [Read more](#)

Material: Polyamide

Note: Plastic sheaves are not suitable for all conditions!

Sheave PA with Cylindrical Roller Bearings

Blueprint



Technical data

Part code	Rope Ø range mm	Shaft Ø mm	Groove radius	Sheave dia. mm	Bearing	øD2 mm in	øG mm in	Rmm in	øD1 mm in	øD3 mm in	E in	F in	ød mm in	Weight lb
140101200270	13	50	7	300 / 260	SL04 5010PP	10.24	1.97	0.28	11.81	10.71	1.34	1.57	0.51	6.39
140101200271	13	60	7	325 / 285	SL04 5012PP	11.22	2.36	0.28	12.8	11.69	1.34	1.81	0.51	8.6
140101700270	13	65	9.5	400 / 352	SL04 5013PP	13.86	2.56	0.37	15.75	14.53	1.65	1.81	0.67	12.13
140101600270	16	65	8.5	400 / 352	SL04 5013PP	13.86	2.56	0.33	15.75	14.49	1.65	1.81	0.63	12.35
140101600271	16	80	8.5	400 / 352	SL04 5016PP	13.86	3.15	0.33	15.75	14.49	1.97	2.36	0.63	16.76
140101600272	16	90	8.5	596 / 528	SL04 5018PP	20.79	3.54	0.33	23.46	21.42	2.44	2.64	0.63	33.73
140101800270	18	90	10	460 / 400	SL04 5018PP	15.75	3.54	0.39	18.11	16.46	2.36	2.64	0.71	23.83
140101800272	18	160	10	460 / 400	SL04 160PP	15.75	6.3	0.39	18.11	16.46	2.83	3.15	0.71	29.85
140101800271	18	120	10	460 / 400	SL04 5024PP	15.75	4.72	0.39	18.11	16.46	2.83	3.15	0.71	30.86
140101900270	19	90	10.5	460 / 400	SL04 5018PP	15.75	3.54	0.41	18.11	16.5	2.36	2.64	0.75	21.61
140102100270	21	90	11.5	560 / 482	SL04 5018PP	18.98	3.54	0.45	22.05	19.8	2.44	2.64	0.83	30.86
140102100272	21	160	11.5	560 / 482	SL04 160PP	18.98	6.3	0.45	22.05	19.8	2.83	3.15	0.83	37.92
140102100271	21	120	11.5	560 / 482	SL04 5024PP	18.98	4.72	0.45	22.05	19.8	2.83	3.15	0.83	38.67
140102200271	22	90	12	558 / 482	SL04 5018PP	18.98	3.54	0.47	21.97	19.84	2.44	2.64	0.87	28.66
140102200270	22	90	12	596 / 528	SL04 5018PP	20.79	3.54	0.47	23.46	21.65	2.36	2.64	0.87	33.07
140102400272	24	90	13	596 / 528	SL04 5018PP	20.79	3.54	0.51	23.46	21.73	2.44	2.64	0.94	33.07
140102400270	24	120	13	596 / 528	SL04 5024PP	20.79	4.72	0.51	23.46	21.73	2.83	3.15	0.94	46.08
140102400271	24	120	13	596 / 528	SL04 160PP	20.79	4.72	0.51	23.46	21.73	2.83	3.15	0.94	48.72
140102600270	26	70	14	416 / 350	SL04 5014PP	13.78	2.76	0.55	16.38	14.8	2.05	2.13	1.02	13.01
140102600270	26	90	14	596 / 528	SL04 5018PP	20.79	3.54	0.55	23.46	21.81	2.44	2.64	1.02	32.85
140102800270	28	160	15.5	710 / 630	SL04 160PP	24.8	6.3	0.61	27.95	25.91	2.95	3.15	1.1	61.73