

## Closed Swage Socket Crosby S-502

### Product information



Sockets incorporate a reduced machined area of the shank which is the equivalent to the proper after swage dimension. Before swaging, this provides for an obvious visual difference in the shank diameter. After swaging, a uniform shank diameter is created allowing for a QUIC CHECK™ permanent visual inspection opportunity. Designed to quickly determine whether the socket has been through the swaging operation and assist in field inspections, it does not eliminate the need to perform standard production inspections which include gauging for the proper after swage dimensions or proof loading.

Hardness controlled by spheroidise annealing.

Swage socket terminations have an efficiency rating of 100% based on the catalogue strength of wire rope.

... [Read more](#)

**Material:** Carbon Steel.

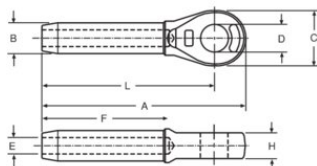
**Marking:** ID code and Manufacturer's symbol.

**Finish:** Ungalvanised.

**Safety factor:** 5:1

## Closed Swage Socket Crosby S-502

### Blueprint



### Technical data

Part code	Rope Ø range mm	Max. after swage dia mm	A in	B in	C in	D, in	E in	F in	H, in	L in	Weight lb
12071039325	6	11,7	4.29	0.47	1.38	0.75	0.24	2.13	0.47	3.5	0.33
12071039343	8	18,0	5.43	0.75	1.61	0.87	0.31	3.19	0.67	4.49	0.75
12071039361	9-10	18,0	5.43	0.75	1.61	0.87	0.39	3.19	0.67	4.49	0.73
12071039389	11-12	23,1	6.93	0.94	2.01	1.02	0.47	4.25	0.83	5.75	1.41
12071039405	13	23,1	6.93	0.94	2.01	1.02	0.55	4.25	0.83	5.75	1.41
12071039423	14	29,5	8.66	1.22	2.36	1.22	0.59	5.31	1.1	7.24	2.91
12071039441	16	29,5	8.66	1.22	2.36	1.26	0.67	5.31	1.1	7.24	2.84
12071039469	18-20	36,1	10.28	1.54	2.87	1.42	0.79	6.38	1.3	8.62	5
12071039487	22	39,4	11.93	1.69	3.11	1.73	0.91	7.44	1.5	10.12	6.79
12071039502	24-26	45,7	13.54	1.97	3.62	2.05	1.02	8.5	1.73	11.5	10.41
12071039520	28	52,0	15.04	2.24	4.02	2.28	1.19	9.57	2.01	12.76	14.82
12071039548	32	58,5	16.93	2.52	4.49	2.56	1.3	10.63	2.24	14.37	21.56
12071039566	33-34	65,0	18.62	2.8	5	2.56	1.42	11.69	2.24	15.75	28.44
12071039584	38-40	71,5	20.12	3.07	5.51	2.8	1.57	12.8	2.48	17.01	38.14
12071039600	44	77,5	23.54	3.39	6.26	3.54	1.85	14.88	2.99	20	50.93
12071042589	48-52	90,5	27.64	3.94	7.24	3.78	2.09	17.01	3.23	22.99	89.29