

Open Swage Socket Crosby S-501

Product information



Features:

- Swage sockets incorporate a reduced machined area of the shank which is the equivalent to the proper after swage dimension. Before swaging, this provides for an obvious visual difference in the shank diameter. After swaging, a uniform shank diameter is created allowing for a QUIC CHECK™ permanent visual inspection opportunity.
- Designed to quickly determine whether the socket has been through the swaging operation and assist in field inspections, it does not eliminate the need to perform standard production inspections which include gauging for the proper after swage dimensions or proof loading.
- Hardness controlled by spheroidise annealing.
- Swage socket terminations have an efficiency rating of 100% based on the catalogue strength of wire rope.

[... Read more](#)

Material: Carbon Steel.

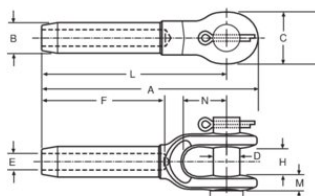
Marking: ID code and Manufacturer's symbol.

Finish: Ungalvanised.

Safety factor: 5:1

Open Swage Socket Crosby S-501

Blueprint



Technical data

Part code	Rope Ø range mm	Max. after swage dia mm	A in	B in	C in	D, in	E in	F in	H, in	L in	Mmm in	Nmm in	Weight lb
12071039021	6	11,7	4.8	0.47	1.38	0.67	0.24	2.13	0.67	4.02	0.35	1.5	0.53
12071039049	8	18	6.26	0.75	1.62	0.79	0.31	3.19	0.79	5.31	0.43	1.73	1.12
12071039067	9-10	18	6.26	0.75	1.61	0.79	0.39	3.19	0.79	5.31	0.43	1.73	1.3
12071039085	11-12	23,1	7.8	0.94	2.01	0.98	0.47	4.25	0.98	6.69	0.55	2.01	2.07
12071039101	13	23,1	7.8	0.94	2.01	0.98	0.55	4.25	0.98	6.69	0.55	2.01	2.07
12071039129	14	29,5	9.49	1.22	2.36	1.18	0.59	5.31	1.22	8.15	0.67	2.24	4.67
12071039147	16	29,5	9.49	1.22	2.36	1.18	0.67	5.31	1.22	8.15	0.67	2.24	4.52
12071039165	18-20	36,1	11.57	1.54	2.76	1.38	0.79	6.38	1.5	10	0.79	2.76	7.98
12071039183	22	39,4	13.43	1.69	3.11	1.61	0.91	7.44	1.73	11.61	0.91	3.23	11.53
12071039209	24-26	45,7	15.47	1.97	3.66	2.01	1.02	8.5	2.01	13.39	1.02	3.74	17.79
12071039227	28	52	17.32	2.24	4.13	2.24	1.18	9.65	2.24	15	1.18	4.25	25.35
12071039245	32	58,5	19.06	2.52	4.49	2.48	1.3	10.71	2.48	16.5	1.22	4.69	35.49
12071039263	34-36	65	20.94	2.8	5	2.48	1.42	11.69	2.48	18.15	1.38	5.24	43.65
12071039281	38-40	71,5	23.19	3.07	5.51	2.76	1.57	12.8	2.99	19.76	1.69	5.71	58.42
12071039307	44	77,5	26.61	3.39	6.69	3.5	1.85	14.88	3.5	22.99	2.09	6.73	88.85
12071042767	48-52	90,5	31.46	3.94	7.99	3.74	2.09	17.01	4.02	26.89	2.36	7.99	145.51