

Wireless Loadshackle

Product information



Wireless loadshackle with low headroom and a load-centering bobbin.

Battery type/life: Loadcell 4 x AA Alkaline/Load cell 1200 hours continuous.

Accuracy: $\pm 1\%$ of applied load.

Frequency: 2.4 GHz.

System range: 700 m.

Data rate: 3 updates per second.

Protection: IP67.

... [Read more](#)

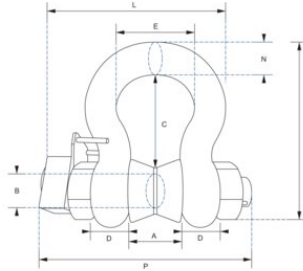
Temperature range: -10°C up to $+50^{\circ}\text{C}$.

Note: Safety factor when used with a load bobbin.

Safety factor: 5:1

Wireless Loadshackle

Blueprint



Technical data

Part code	Code	WLL (metric) tonnes	Resolution kg	A in	ØB in	C in	D, in	E in	H, in	L in	Nmm in	Pmm in	Weight lb
423500330160	WLS3,25T	3.25	5	1.06	0.75	2.24	0.63	1.69	4.17	5	0.69	5.63	6.17
423500650160	WLS6,5T	6.5	5	1.44	1	3.14	0.88	2.28	5.83	6.16	0.97	6.81	7.05
423501200160	WLS12T	12	10	2.03	1.38	4.45	1.25	3.25	8.27	7.72	1.38	8.58	17.64
423502500160	WLS25T	25	20	2.87	2.01	6.69	1.75	5	12.32	11.06	2.24	11.54	39.68
423505500160	WLS55T	55	50	3.25	2.24	7.46	2.01	6.46	13.7	12.05	2.4	12.48	55.12
423508500160	WLS85T	85	50	4.13	2.76	9.96	2.62	7.24	17.83	14.49	3.11	15.51	187.39
423512000160	WLS120T	120	100	5	3.25	12.58	2.99	7.87	21.5	16.06	3.62	17.36	275.58
423520000160	WLS200T	200	200	7.09	4.92	19.02	4.72	11.42	31.89	22.83	4.72	22.24	573.2
423530000160	WLS300T	300	500	8.07	5.91	22.68	5.12	12.01	37.4	24.21	5.12	24.21	892.87
423540000160	WLS400T	400	500	9.06	6.89	25.59	6.5	12.8	43.31	27.76	6.5	27.99	1,459.46