

Snatch Block McKissick 406 Tail Board - Champion

Product information



The McKissick snatch block 406 Champion from Crosby is a Tail board type snatch block. Can be delivered with bronze bushing (BB) and with roller bearing (RB).

Features:

- Bolt for opening feature is retained, to ensure no lost bolts.
- Opening feature permits easy insertion of rope without reeving, or while the block is suspended.
- Center pin equipped with pressure lube fitting.
- All sizes feature sheave grooves suited for a range of wire line diameters.
- Meets or exceeds all requirements of ASME B30.26 including identification ductility, design factor, proof load and temperature requirements.
- Meet other critical performance requirements including fatigue life and material traceability, not addressed by ASME B30.26.

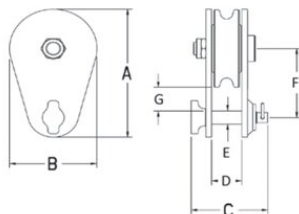
... [Read more](#)

Material: Forged steel.

Safety factor: 4:1

Snatch Block McKissick 406 Tail Board - Champion

Blueprint



Technical data

Part code	Rope Ø range mm	WLL (metric) tonnes	Sheave dia mm	Bearing	A in	B in	C in	D in	E in	F in	G, in	Weight lb
424101500270	19-22	15	203	BB	13.98	8.11	5.12	2.36	1.26	6.73	2.13	29.98
424101500275	19-22	15	203	RB	13.19	8.11	5.12	2.36	1.26	6.73	2.13	29.98
424101500276	19-22	15	254	BB	14.92	10.12	5.12	2.36	1.26	7.52	1.93	42.11
424101500277	19-22	15	254	RB	14.92	10.12	5.12	2.36	1.26	7.52	1.93	42.11