

Eye Bolt Shoulder Type Machinery Crosby M-279

Product information



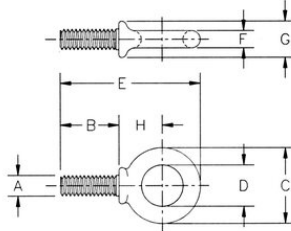
- Working load limits shown are for in-line pull.
- Recommended for in-line pull.
- Fatigue rated at 1-1/2 times the Working Load Limit at 20,000 cycles- ... [Read more](#)

Material: Forged steel - quenched and tempered.

Safety factor: 4:1

Eye Bolt Shoulder Type Machinery Crosby M-279

Blueprint



Technical data

WLL (metric) tonnes	Thread mm	A mm	B in	C in	D in	E in	F in	G in	H in	Weight lb
0.2	M6 x 1.0	M6 x 1.0	0.51	1.13	0.75	1.85	0.19	0.53	0.77	0.07
0.4	M8 x 1.25	M8 x 1.25	0.51	1.38	0.88	2.15	0.25	0.59	0.95	0.11
0.64	M10 x 1.5	M10 x 1.5	0.67	1.62	1	2.53	0.31	0.69	1.04	0.15
1	M12 x 1.75	M12 x 1.75	0.81	1.95	1.19	3.06	0.38	0.91	1.29	0.24
1.8	M16 x 2.0	M16 x 2.0	1.06	2.38	1.38	3.78	0.5	1.13	1.53	0.55
2.5	M20 x 2.5	M20 x 2.5	1.18	2.76	1.5	4.25	0.63	1.38	1.71	0.93
4	M24 x 3.0	M24 x 3.0	1.42	3.76	2.01	5.59	0.88	1.81	2.3	2.31
5	M27 x 3.0	M27 x 3.0	2.75	4.21	2.25	7.2	0.97	2.06	2.35	3.13
6	M30 x 3.5	M30 x 3.5	1.77	4.49	2.5	6.73	1	2.28	2.73	3.9
8.5	M36 x 4.0	M36 x 4.0	2.13	5.51	2.99	8.15	1.25	2.76	3.28	6.88
14	M42 x 4.5	M42 x 4.5	3.75	6.26	3.5	10.47	1.38	3	3.6	10.1
17.3	M48 x 5.0	M48 x 5.0	4.02	7.64	3.98	12.32	1.81	3.38	4.49	19.2
29.5	M64 x 6.0	M64 x 6.0	5	8.78	4.49	14.88	2.12	4.25	5.51	32.5