

Eye Bolt Shoulder Type Machinery Crosby S-279 UNC

Product information



Working Load Limits shown are for in-line pull.
Recommended for straight line pull.
Fatigue rated at 1 1/2 times the Working Load Limit at 20,000 cycles.
Standard bolts threaded UNC.

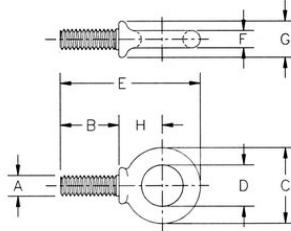
[... Read more](#)

Material: Forged Steel – Quenched & Tempered.

Safety factor: 4:1

Eye Bolt Shoulder Type Machinery Crosby S-279 UNC

Blueprint



Technical data

Part code	WLL lb	Thread Inch	B in	C in	D in	E in	F in	G in	H in	Weight lb
421100070210	1,550	3/8 - 16	1.27	1.62	1	3.07	0.31	0.69	1.05	0.13
421100120210	2,600	1/2 - 13	1.53	1.95	1.19	3.7	0.38	0.91	1.27	0.26
421100240210	5,200	5/8 - 11	1.79	2.38	1.38	4.45	0.5	1.13	1.53	0.53
421100330210	7,200	3/4 - 10	2.05	2.76	1.5	5.08	0.63	1.38	1.71	0.95
421100480210	10,600	7/8 - 9	2.3	3.25	1.75	5.87	0.75	1.56	2	1.54
421100600210	13,300	1 - 8	2.58	3.76	2.01	6.65	0.88	1.81	2.3	2.43
421100680210	15,000	1-1/8 - 7	2.75	4.21	2.25	7.2	0.97	2.06	2.35	3.31
421100950210	21,000	1-1/4 - 7	3.09	4.49	2.5	7.95	1	2.28	2.73	3.97
421101080210	24,000	1-1/2 - 6	3.6	5.51	2.99	9.49	1.25	2.76	3.28	7.05
421101540210	34,000	1-3/4 - 5	3.75	6.26	3.5	10.47	1.38	3	3.6	10.36
421101900210	42,000	2 - 4-1/2	4.02	7.64	3.98	12.32	1.81	3.38	4.49	18.96
421102950210	65,000	2-1/2 - 4	5	8.78	4.49	14.88	2.12	4.25	5.51	31.97

Eye Bolt Shoulder Type Machinery Crosby S-279 UNC

M-279 Metric

Stock Code	Size mm	Working Load Limit t	Dimension (mm)	Weight kg						
		B	C	D	E	F	G	H		
11.401045753M6		0,2	13	28.7	19.1	47	4.9	13.5	19.6	0.03
11.401045789M8		0,4	13	35.1	22.4	54.6	6.4	15	24.1	0.05
11.401045831M10		0,64	17	41.1	25.4	64.3	7.9	17.5	26.5	0.07
11.401045861M12		1	20.5	49.5	30.2	77.7	9.7	23.1	32.8	0.11
11.401045911M16		1,8	27	60.5	35.1	96	12.7	28.7	38.9	0.25
11.401045991M20		2,5	30	70	38.1	108	16	35.1	43.4	0.42
11.401046021M24		4	36	95.5	51	142	22.4	46	58.4	1.05
11.401046031M27		5	69.8	107	57.1	183	24.6	52.3	59.7	1.42
11.401046071M30		6	45	114	63.5	171	25.4	58	69.3	1.77
11.401046101M36		8.5	54	140	76	207	31.8	70	83.3	3.12
11.401046111M42		14	95.2	159	88.9	266	35	76.2	91.4	4.58
11.401046121M48		17.3	102	194	101	313	46	85.9	114	8.71
11.401046131M64		29.5	127	223	114	378	53.8	108	140	14.74