

Cyclone hand chain hoist



One of the most popular and reliable hoists ever designed, the Cyclone combines superior engineering, efficiency and durability. Available in a variety of capacities from 1/4 ton to 10 tons, Cyclone features:

- Most interchangeability of parts in the industry
- Standard Load Limiter for simple, automatic overload protection
- Enclosed contoured Weston-type automatic brake for positive load control
- High-efficiency spur gearing for greater lift with minimum effort
- Rugged Hoistaloy chain for added strength and durability
- Fully machined, forged liftwheel pockets for easier lifting and smooth free chaining

* WARNING

Overloading and improper use can result in injury.

To avoid injury:

- Do not exceed working load limit, load rating capacity
- Do not use to lift people or loads over people.
- use only alloy chain for overhead lifting.
- Read and follow all instructions.

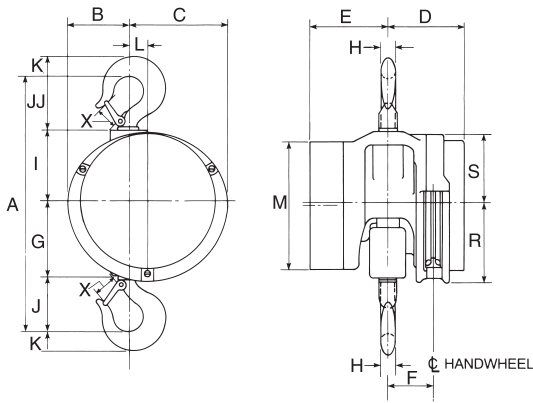
-
- High-strength aluminum alloy castings in frame and covers
 - Inspected over 75 times to meet or exceed HMI and ASME/ANSI performance and safety standards
 - Standard hand chain drop is 2 feet less than lift, (example: 8 foot lift hoist has 6 foot hand chain drop)
 - Lifetime warranty
 - Metric rated
 - Made in U.S.A.
-

Options Include:

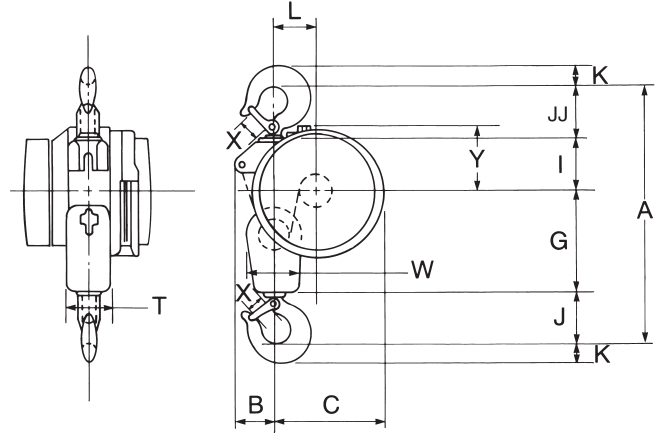
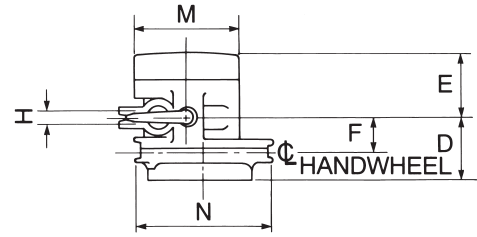
- Fabric chain bags
- Metal chain containers
- Zinc-plated load and hand chain
- Unwelded hand chain
- Latchlok hooks
- Bronze hooks
- Bullard hooks
- Eye-type suspension



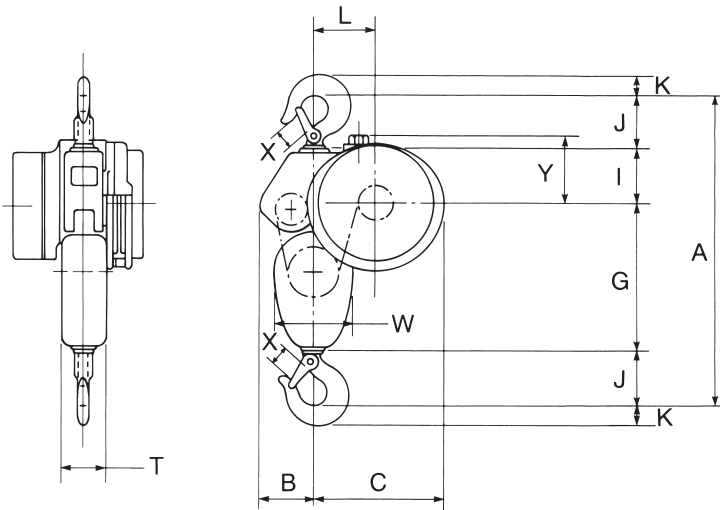
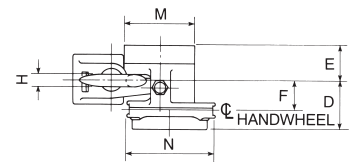
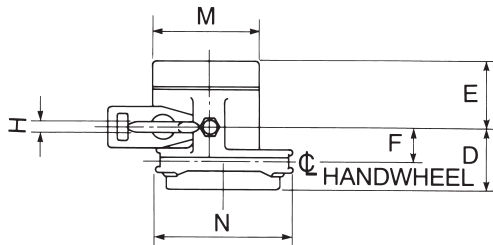
Cyclone hand chain hoist-Specifications



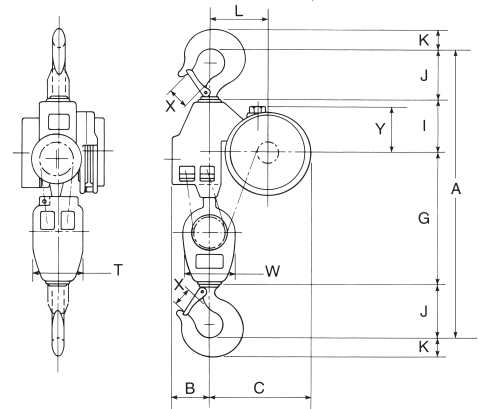
1/4 - 2 ton



3 - 4 ton



5 - 6 ton



8 - 10 ton

Cyclone hand chain hoist-Specifications

Specifications

| Rated capacity* (tons) | Product code | Standard lift† (ft.) | Reeving | Minimum distance between hooks (in.) | Chain overhauled to lift load one foot (ft.) | Chain pull to lift full load (lbs.) | Shipping weight (lbs.) |
|------------------------|--------------|----------------------|---------|--------------------------------------|--|-------------------------------------|------------------------|
| 1/4 | 4621 | 8 | 1 | 12 ⁷ / ₈ | 22 ¹ / ₂ | 23 | 37 |
| 1/2 | 4622 | 8 | 1 | 12 ⁷ / ₈ | 22 ¹ / ₂ | 46 | 37 |
| 1 | 4624 | 8 | 1 | 14 | 30 | 69 | 40 |
| 1 1/2 | 4625 | 8 | 1 | 17 ⁵ / ₁₆ | 40 ¹ / ₂ | 80 | 65 |
| 2 | 4626 | 8 | 1 | 17 ⁵ / ₁₆ | 52 | 83 | 64 |
| 3 | 4627 | 8 | 2 | 21 ¹ / ₂ | 81 | 85 | 96 |
| 4 | 4628 | 8 | 2 | 21 ¹ / ₂ | 104 | 88 | 96 |
| 5 | 4629 | 8 | 3 | 24 ¹ / ₄ | 156 | 75 | 128 |
| 6 | 4630 | 8 | 3 | 25 ¹ / ₄ | 156 | 90 | 132 |
| 8 | 4631 | 8 | 4 | 34 ¹ / ₂ | 208 | 89 | 235 |
| 10 | 4632 | 8 | 5 | 35 ¹ / ₂ | 260 | 95 | 249 |

† Can be supplied with longer lifts

Clearance dimensions (in.)

| Dimension | Rated capacity* (tons) | | | | | | | | |
|-----------|---------------------------------|---------------------------------|---------------------------------|---------------------------------|---------------------------------|----------------------------------|----------------------------------|---------------------------------|---------------------------------|
| | 1/4 | 1/2 | 1 | 1 1/2 & 2 | 3 & 4 | 5 | 6 | 8 | 10 |
| A | 12 ⁷ / ₈ | 12 ⁷ / ₈ | 14 | 17 ⁵ / ₁₆ | 21 ¹ / ₂ | 24 ¹ / ₄ | 25 ¹ / ₄ | 34 ¹ / ₂ | 35 ¹ / ₂ |
| B | 3 ¹¹ / ₁₆ | 3 ¹¹ / ₁₆ | 3 ¹¹ / ₁₆ | 4 ³ / ₁₆ | 3 ⁵ / ₁₆ | 4 ³ / ₁₆ | 4 ³ / ₁₆ | 4 ³ / ₄ | 4 ³ / ₄ |
| C | 7 ³ / ₁₆ | 7 ³ / ₁₆ | 7 ³ / ₁₆ | 6 ¹¹ / ₁₆ | 8 ¹⁵ / ₁₆ | 10 ⁵ / ₁₆ | 10 ⁵ / ₁₆ | 12 ³ / ₄ | 12 ³ / ₄ |
| D | 4 ¹ / ₈ | 4 ¹ / ₈ | 4 ¹ / ₈ | 5 ¹ / ₁₆ | 5 ¹ / ₁₆ | 4 ⁷ / ₈ | 4 ⁷ / ₈ | 5 ¹³ / ₁₆ | 5 ¹³ / ₁₆ |
| E | 3 ¹ / ₄ | 3 ¹ / ₄ | 3 ¹ / ₄ | 4 ¹³ / ₁₆ | 4 ¹³ / ₁₆ | 5 | 5 | 4 ¹ / ₁₆ | 4 ¹ / ₁₆ |
| F | 2 ¹ / ₁₆ | 2 ¹ / ₁₆ | 2 ¹ / ₁₆ | 3 ¹ / ₈ | 3 | 2 ¹⁵ / ₁₆ | 2 ¹⁵ / ₁₆ | 3 ³ / ₄ | 3 ³ / ₄ |
| G | 3 ⁷ / ₈ | 3 ⁷ / ₈ | 3 ³ / ₄ | 5 ³ / ₁₆ | 8 ¹ / ₄ | 11 ¹³ / ₁₆ | 11 ¹³ / ₁₆ | 17 ³ / ₁₆ | 17 ³ / ₁₆ |
| H | 1 ¹ / ₁₆ | 1 ¹ / ₁₆ | 1 ³ / ₁₆ | 1 ¹ / ₈ | 1 ¹ / ₄ | 1 ¹ / ₄ | 1 ³ / ₈ | 1 ¹¹ / ₁₆ | 1 ¹³ / ₁₆ |
| I | 3 ³ / ₄ | 3 ³ / ₄ | 3 ³ / ₄ | 4 ¹³ / ₁₆ | 4 ¹ / ₄ | 4 ³ / ₁₆ | 4 ³ / ₁₆ | 6 ¹ / ₁₆ | 6 ¹ / ₁₆ |
| J | 2 ⁵ / ₈ | 2 ⁵ / ₈ | 2 ¹⁵ / ₁₆ | 3 ⁵ / ₈ | 4 ¹ / ₈ | 4 ¹ / ₈ | 4 ⁵ / ₈ | 5 ⁵ / ₈ | 6 ¹ / ₈ |
| JJ | 2 ⁵ / ₈ | 2 ⁵ / ₈ | 3 ⁹ / ₁₆ | 3 ¹¹ / ₁₆ | 4 ⁷ / ₈ | — | — | — | — |
| K | 1 ⁵ / ₁₆ | 1 ⁵ / ₁₆ | 1 ¹ / ₈ | 1 ¹ / ₂ | 1 ¹¹ / ₁₆ | 1 ¹¹ / ₁₆ | 1 ⁷ / ₈ | 2 ¹ / ₄ | 2 ⁹ / ₁₆ |
| L | 1 ³ / ₄ | 1 ³ / ₄ | 1 ³ / ₄ | 1 ¹ / ₄ | 3 ¹ / ₂ | 4 ⁷ / ₈ | 4 ⁷ / ₈ | 7 ⁵ / ₁₆ | 7 ⁵ / ₁₆ |
| M | 7 ¹ / ₁₆ | 7 ¹ / ₁₆ | 7 ¹ / ₁₆ | 8 ⁵ / ₈ | 8 ⁵ / ₈ | 8 ⁵ / ₈ | 8 ⁵ / ₈ | 8 ⁵ / ₈ | 8 ⁵ / ₈ |
| N | — | — | — | — | 10 ⁷ / ₈ | 10 ⁷ / ₈ | 10 ⁷ / ₈ | 10 ⁷ / ₈ | 10 ⁷ / ₈ |
| R | 5 ⁷ / ₁₆ | 5 ⁷ / ₁₆ | 5 ⁷ / ₁₆ | 5 ⁷ / ₁₆ | — | — | — | — | — |
| S | 4 ¹¹ / ₁₆ | 4 ¹¹ / ₁₆ | 4 ¹¹ / ₁₆ | 4 ¹¹ / ₁₆ | — | — | — | — | — |
| T | — | — | — | — | 3 ⁷ / ₈ | 4 | 4 | 6 ³ / ₈ | 6 ³ / ₈ |
| W | — | — | — | — | 4 ¹ / ₂ | 6 ¹ / ₄ | 6 ¹ / ₄ | 6 ⁷ / ₁₆ | 6 ⁷ / ₁₆ |
| X | 1 ¹ / ₃₂ | 1 ¹ / ₃₂ | 1 ¹ / ₈ | 1 ⁵ / ₁₆ | 1 ⁵ / ₈ | 1 ⁵ / ₈ | 1 ³ / ₄ | 2 ¹ / ₁₆ | 2 ⁵ / ₁₆ |
| Y | — | — | — | — | 5 ¹ / ₈ | 5 ⁷ / ₈ | 5 ⁷ / ₈ | 5 ⁹ / ₁₆ | 5 ⁹ / ₁₆ |

*** ⚠ WARNING**

Overloading and improper use can result in injury.

To avoid injury:

- Do not exceed working load limit, load rating capacity
- Do not use to lift people or loads over people.
- use only alloy chain for overhead lifting.
- Read and follow all instructions.